

# Vishnupuram



by



Associated Partner



**SQUARE FOOT**  
INVESTOR

**Maa Bhagwati**  
**Enterprises**

*Build your dream house with us...*



**Connecting  
From NH**



**CC Tv Camera**



**Electricity  
& Water Supply**



**Wide Road with  
Street light**

## Special Features



**24x7 Hours  
Security**



**Children  
Park**



**Gated  
Society**



**Community  
Temple**

\*\*T&C apply

## ABOUT US

## CRAFTING SPACES FOR LUXURY LIVING

Welcome to **Square Foot Investor**, your go-to partner for real estate listings. Our platform offers tailored solutions and cutting-edge technology to help brokers and agencies sell properties effortlessly.

At Square Foot Investor, we believe that land is more than just a physical asset—it's the foundation of dreams, legacies, and futures. As Uttarakhand's premier property dealers, we specialize in connecting discerning investors with Investments that not only promise financial returns but also resonate with personal aspirations.

## SPECIFICATIONS

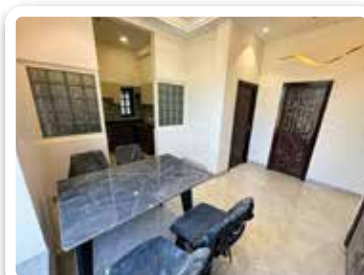
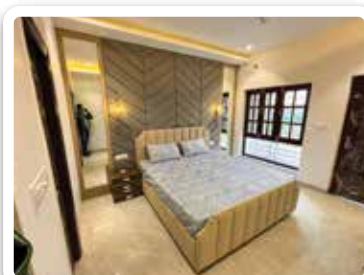
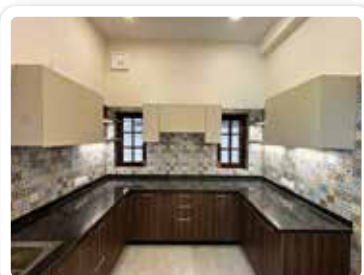
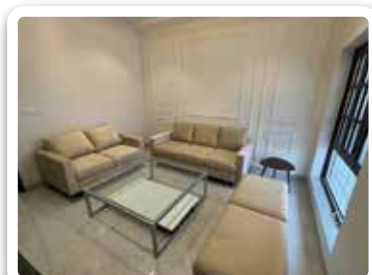
1. STRUCTURE- Earthquake Resistance R.C.C For made structure/Fe 500 Steel used for structure termite treatment.
2. EXTERNAL FINISH - Combination of long lasting OBD Paints.
3. DRAWING AND DINING ROOM- Floor Vitrified tiles/wall Plastered shades /Ceiling plastered POP/ Wall punning work & Paints with pleasing shades.
4. KITCHEN-Floor Vitrified tiles, wall Ceramic glazed tiles is upto 4 Feet height above Counter Ceiling Plastered POP Work & Paints With pleasing shades..
5. BED ROOMS- Vitrified tiles, wall Plasterd and punning work and Paint shades. False ceiling work and paint with pleasing shades.
6. BALCONIES-Anti Skid Ceramic tiles.
7. TOILETS-Floor Anti skid Ceramic tiles and in wall vitrified tiles upto door level. Fitting fixture all taps Chrome Plated ISI Mark wash Basin,WC In all toilets of Bathsense by Asian Paints, provision of hot & Cold water system.
8. DOOR & WINDOW-Commercial Flash Door of Durian Brand in enamel paint and polish in window and door frame of Hard wood, Hardware and fitting of Godrej.
9. STAIRCASE-Floor Combination marble plastered with POP punning work and paint shades, Railing in MS.
10. ELECTRICAL- Copper Connected wires in Bedroom's/D.Room/Toilet/Kitchens, Switch Sockets in all Bedroom/D. Room Provision for AC Sockets are registered.
11. Modular Kitchen, Wardrobe in 2 Bedrooms and toiltes vanity with mirror.

*\*\*NOTE:- These Specifications are purely Conceptual and not a legal offering. In the interest of the applicant the Builder/Architect. Reserves the right to add/delete/after any detail specifications/ map/ plan/elevation, if so warranted by the circumstances without any notices.*





Actual Site Pics



Ground Floor

### FLOOR PLAN

Duplex Villa in row houses

3 Bedroom +  
Drawing Room +  
Dining Area +  
Modular Kitchen +  
Wardrobe +  
Car Parking

Buildup Area  
1650 sqft.

Plot Area  
903 sqft.

Dimension  
21x43



First Floor

Conditions: All specifications amenities, Drawing, Facilities, Etc. Show i this add are subject to change as per the approva from the authorities thefinal description remain with the builder. All images are for presentation purpose only. \*Terms and Conditions Applied



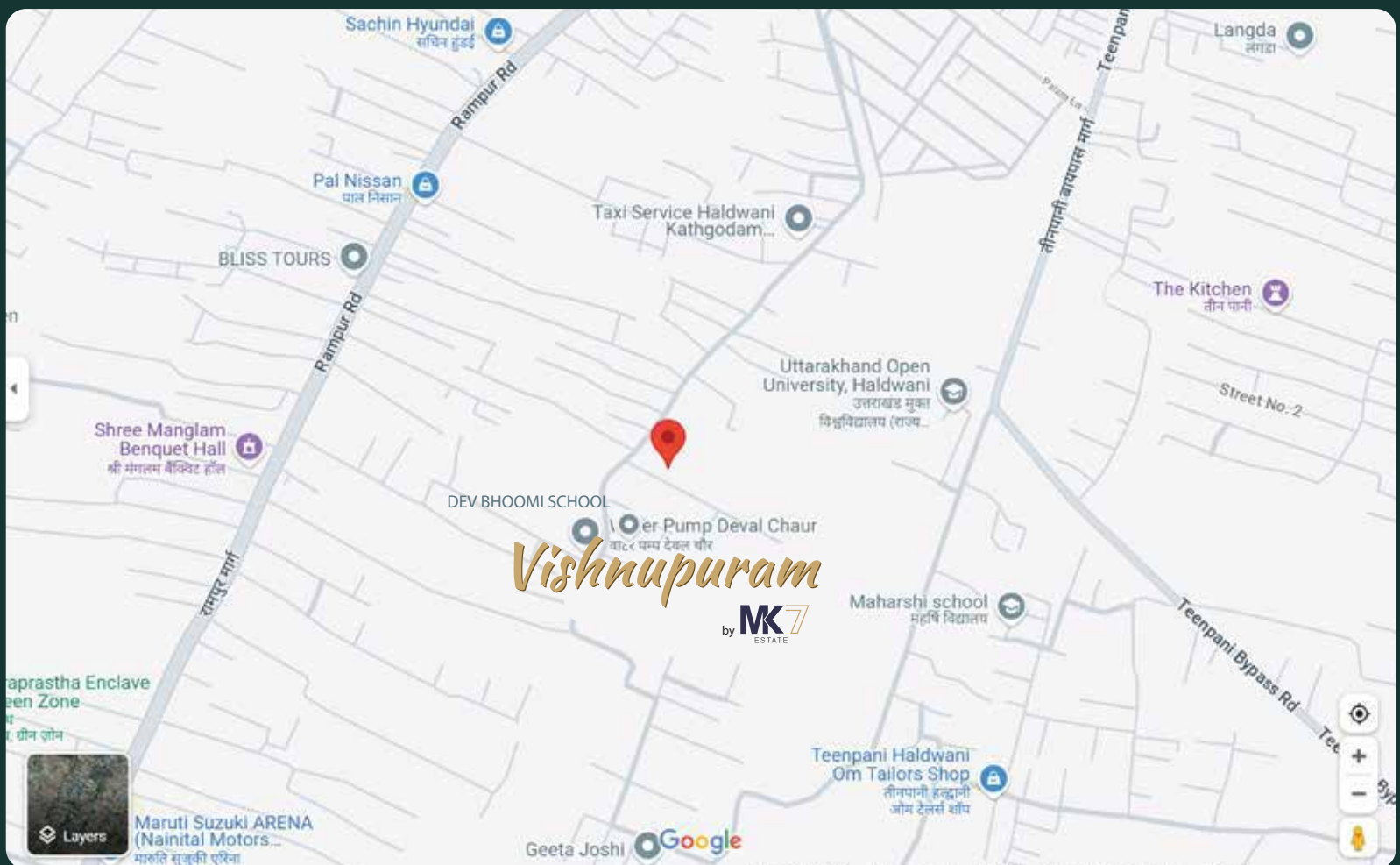
# What are you waiting for?



Changes lives with us...  
Contact us & Get this best opportunity



**SQUARE FOOT**  
INVESTOR



## Location Map:

- |                   |         |             |          |                  |          |
|-------------------|---------|-------------|----------|------------------|----------|
| • Bus Stand       | - 3 KM  | • Main City | - 2 KM   | • Mall           | - 6 KM   |
| • Airport         | - 25 Km | • School    | - 0.5 Km | • Hotel          | - 1 Km   |
| • Railway Station | - 4 Km  | • SIDCUL    | - 20 Km  | • Govt. Hospital | - 1.5 Km |

This Brochure is conceptual and not a legal offer, gives only a bird eye views of the project, the content in this brochure including building area, desing, layout specification etc are tentative and are miraclly indicative in nature and modification by the competent authorities statutory and otherwise.

### Head Office:

Behind Uttarakhand Open University, Maanpur East,  
Haldwani, Uttarakhand

### Associated Partner Office

2nd Floor, Squarefoot Investor, Sapphire Complex,  
kamalwaganja Road, Near Gurukul School,  
Haldwani PIN 263139

## Call: +91 9258355880, +91 9758284346

**Website:** [www.squarefootinvestor.in](http://www.squarefootinvestor.in) | **E-mail:** [info@squarefootinvestor.in](mailto:info@squarefootinvestor.in)

Follow us/@squarefootinvestor   